



Linear



INTERNO
DOORS BY ALUMIL



The elegant interior doors of the Linear series are available in numerous materials, colors, designs and finishes. Its modern linear design reveals the beautiful simplicity of clean lines, while the door leaf is mounted on concealed hinges. The adjustable aluminium frame, allows the easy installation in any type of wall. It is also available in sliding version.

Available in heights up to 3 meters, Linear series may be installed in any type of wall structure, available in a wide range of finishes. The system is equipped in its standard version with simple room lock and an option of two different types of hinges, barrel or up-down hinges.

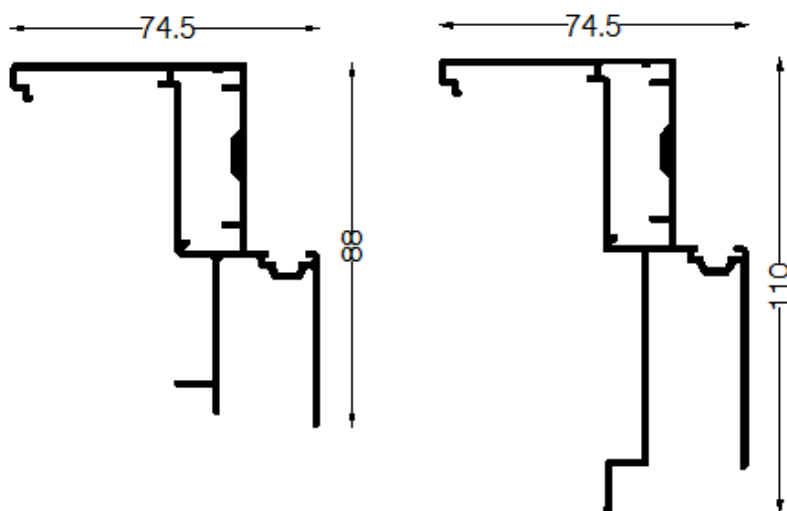
Consisting of five different cover profiles, which can be combined with a frame extension profile, the Linear series could be installed in a wide variety of wall thickness. Either in brick wall or plasterboard, wall thickness starts at 70 mm and exceeds 318 mm, with one or more accumulating frame extension profiles.

Linear Series Doors are available in two different types of visible hinges:

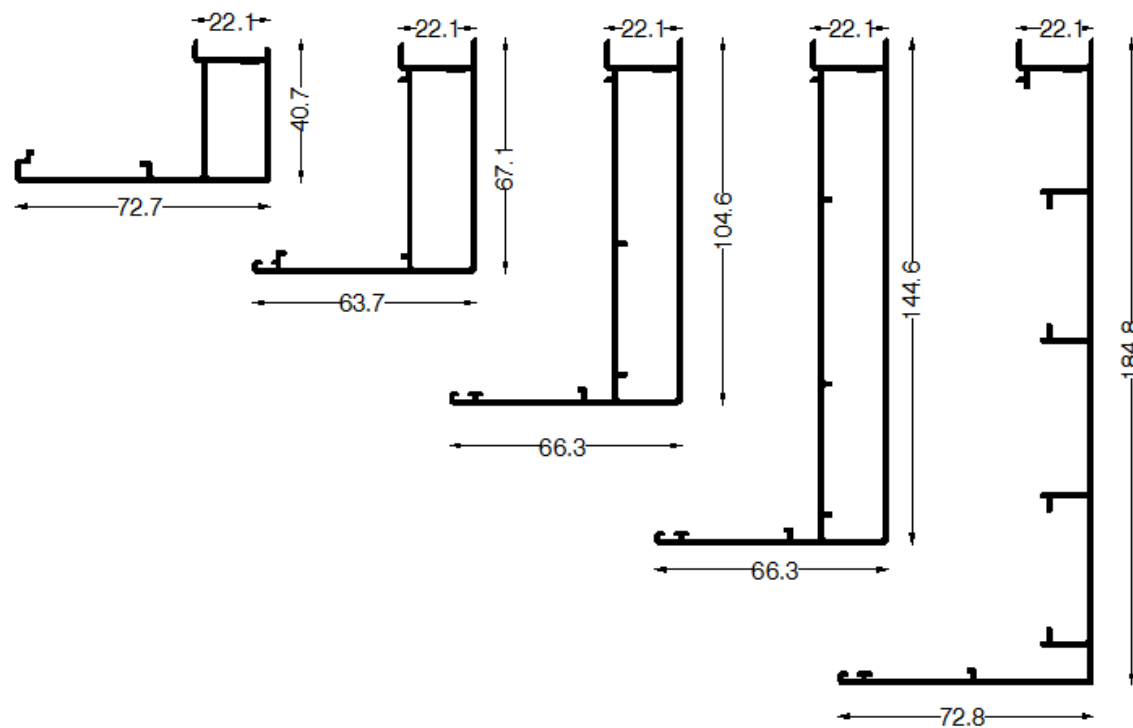
- Linear Twin Door, equipped with barrel Twin AGB hinge.
- Linear Plus Door, equipped with up-down Plus AGB hinge.



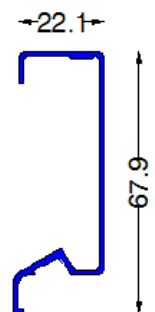
Primary frame profiles



Cover profiles

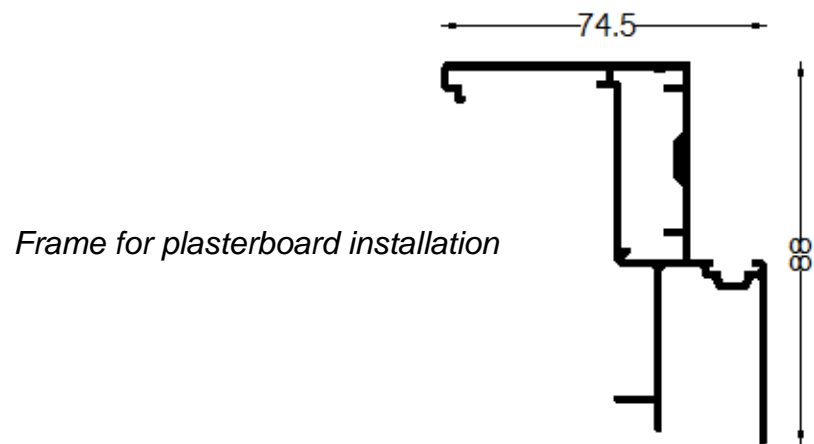


Frame extension profile



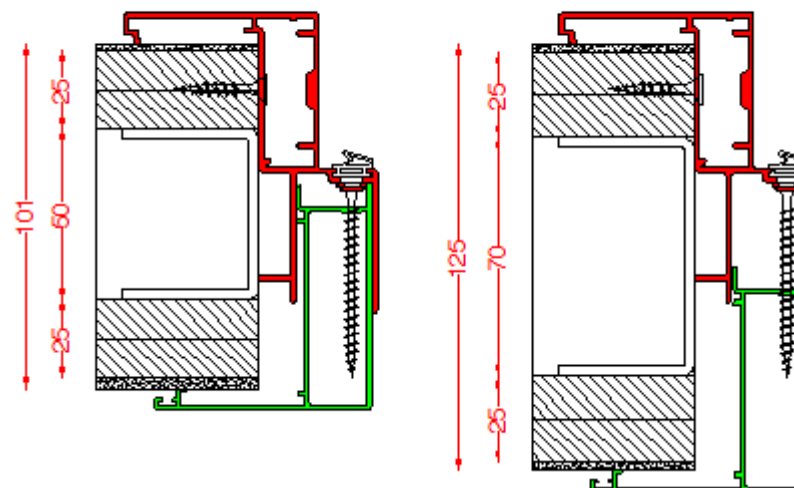
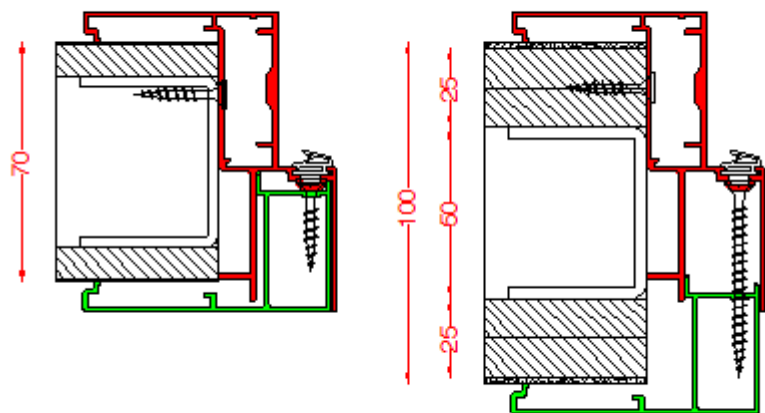


Plasterboard Installation



A. Wall thickness 70 to 100 mm

B. Wall thickness 101 to 125 mm

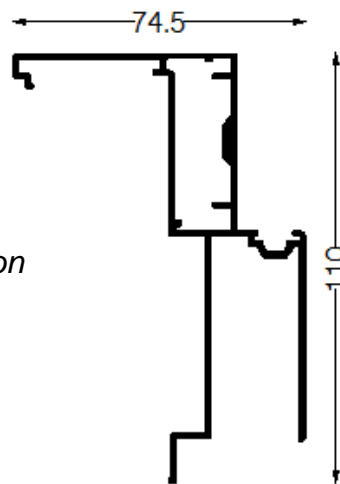




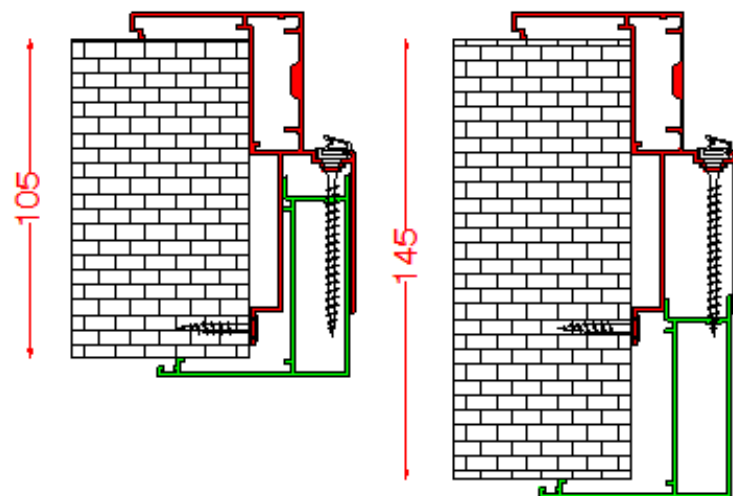
(1/3)

Brick wall Installation

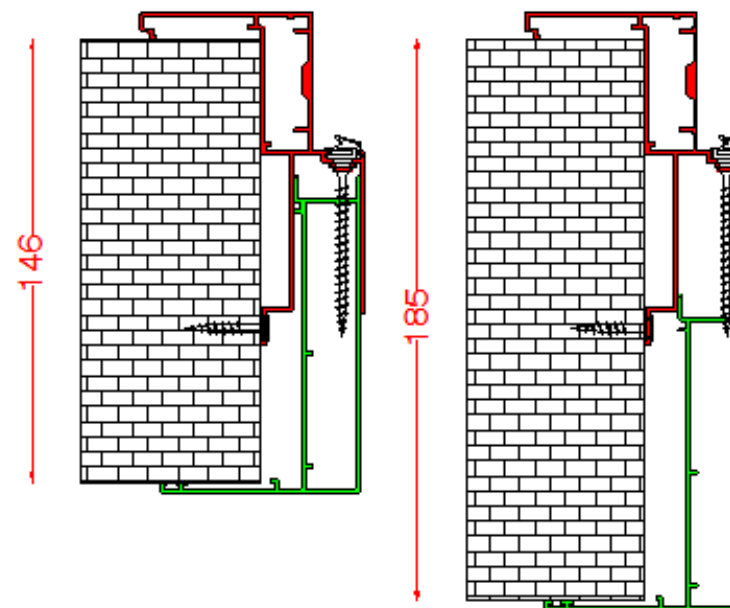
Frame for brick wall installation



A. Wall thickness 105 to 145 mm



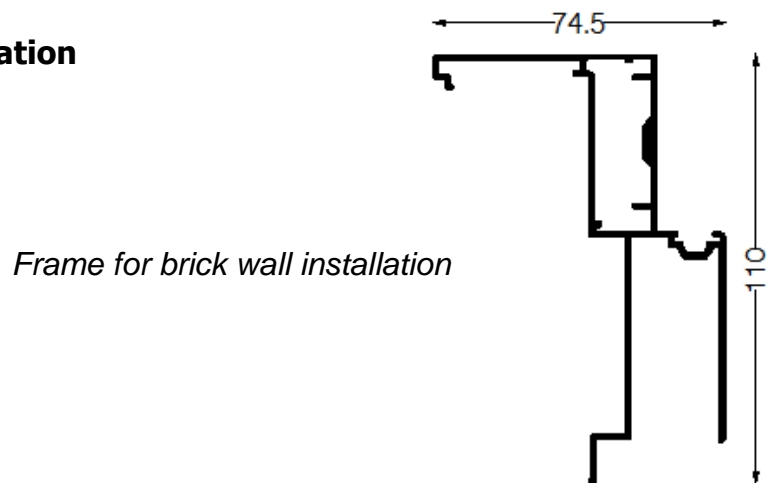
B. Wall thickness 146 to 185 mm



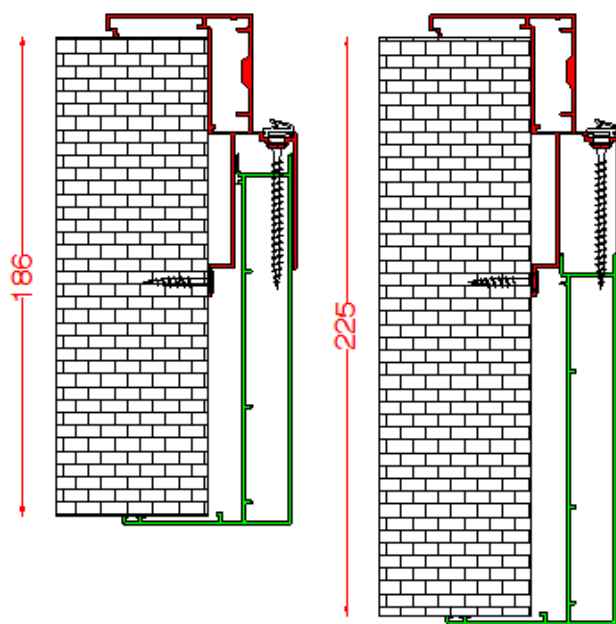


(2/3)

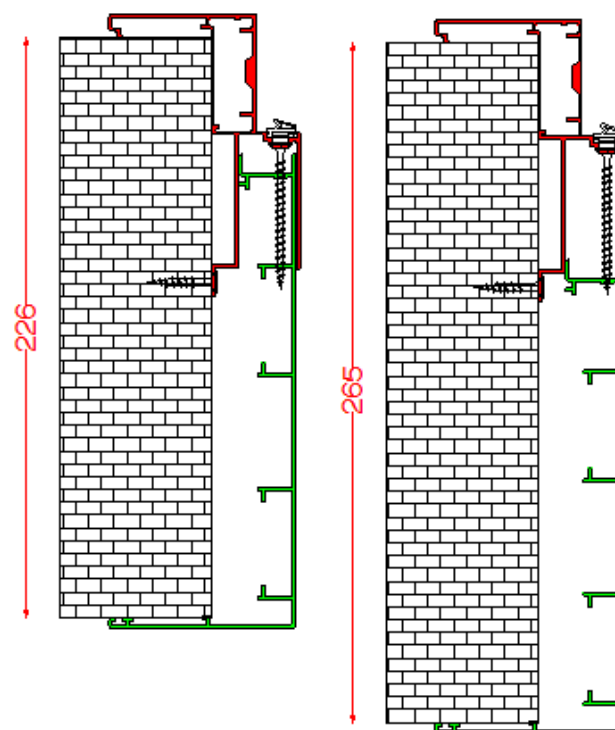
Brick wall Installation



C. Wall thickness 186 to 225 mm



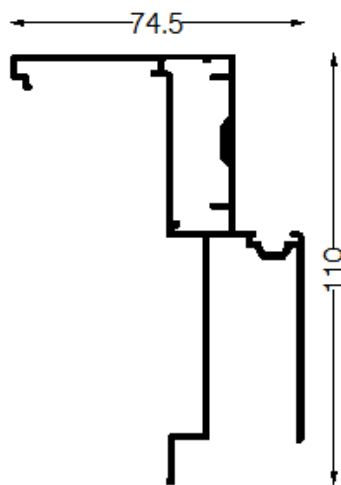
D. Wall thickness 226 to 265 mm



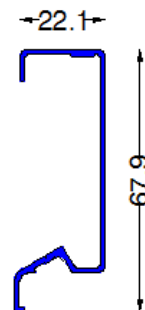


E. Wall thickness from 318 mm and over, adding one or more frame extension profiles

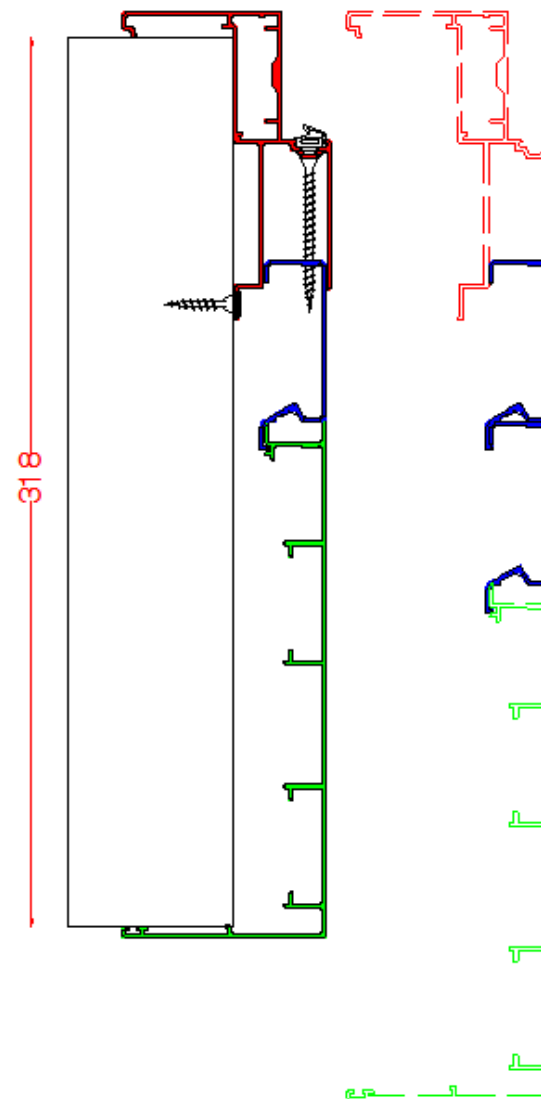
(3/3)



Frame for brick wall installation

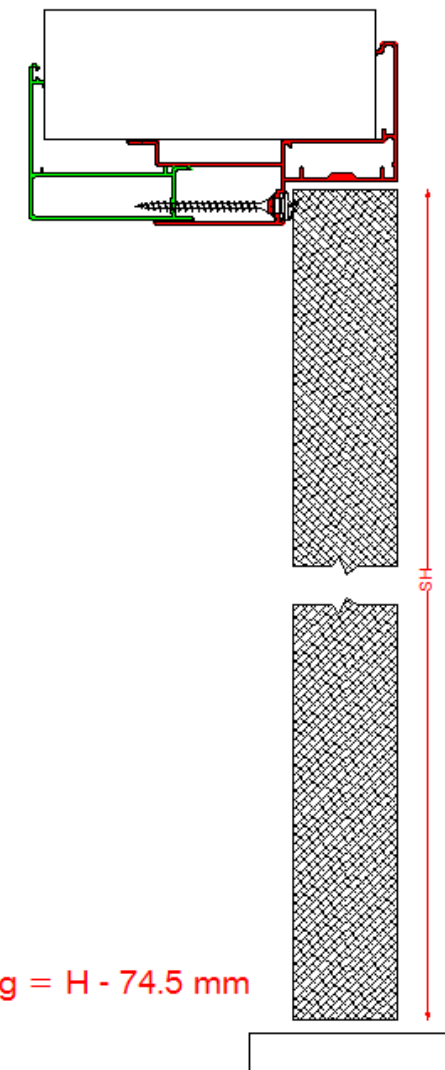
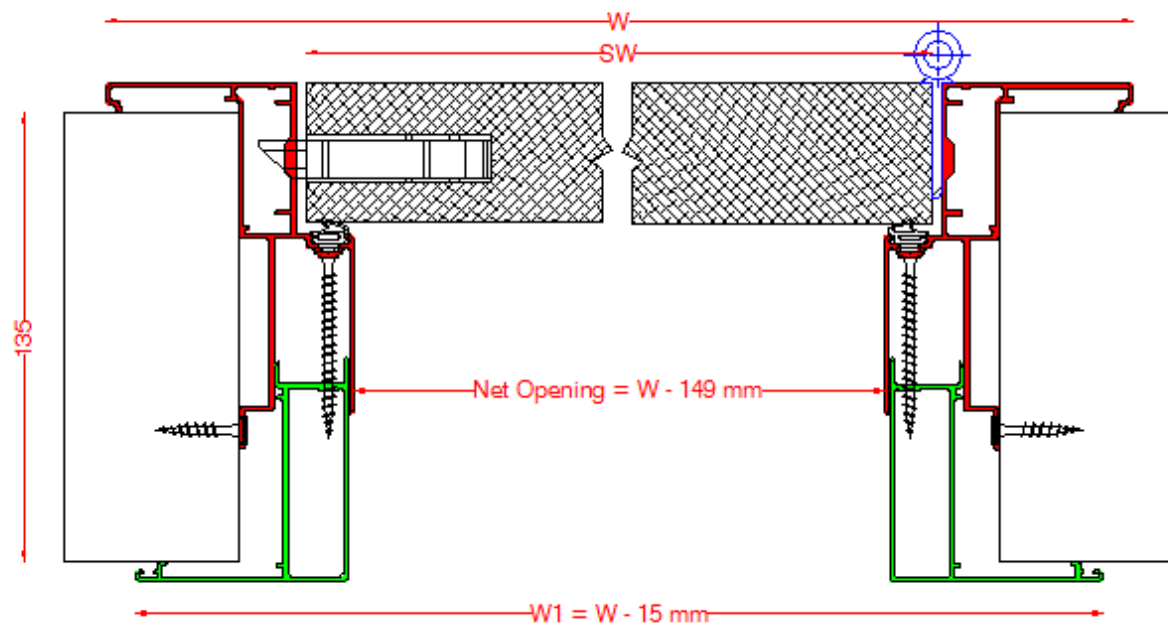


Frame extension profile



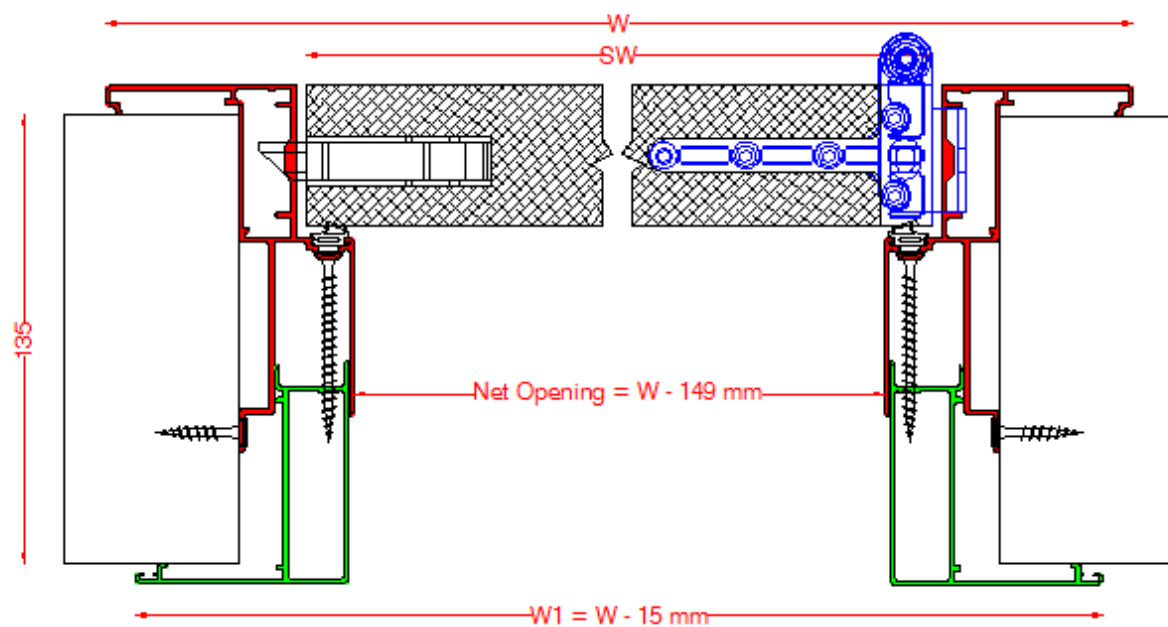


Linear Twin Door



Net opening = $H - 74.5 \text{ mm}$

Linear Plus Door





1. Available dimensions

	WIDTH (mm)	HEIGHT (mm)	WALL THICKNESS (mm)
Standard	900	2150	-
Maximum	1000	3000	from 100 to 250

2. Accessories

SIMPLE ROOM LOCK



TWIN HINGE SYSTEM



PLUS UP/DOWN HINGE SYSTEM





3. Surface finishes

FRAME	LEAF
▪ RAL MATT	▪ Lacquer Matt / Lacquer Gloss / Lacquer Textured ▪ Carbon Fiber Matt / Gloss ▪ Lacquer Gloss ▪ Anodizing Colors / Anodizing Effects
▪ RAL GLOSS	▪ Natural Veneer (Oak, Walnut, etc) ▪ Special Veneer (Ebony, Walnut, Straight Grain)
▪ ANODIZING	▪ 3D Material ▪ Artificial Leather
▪ SABLE	▪ Glass (transparent, colored, laminated, special)